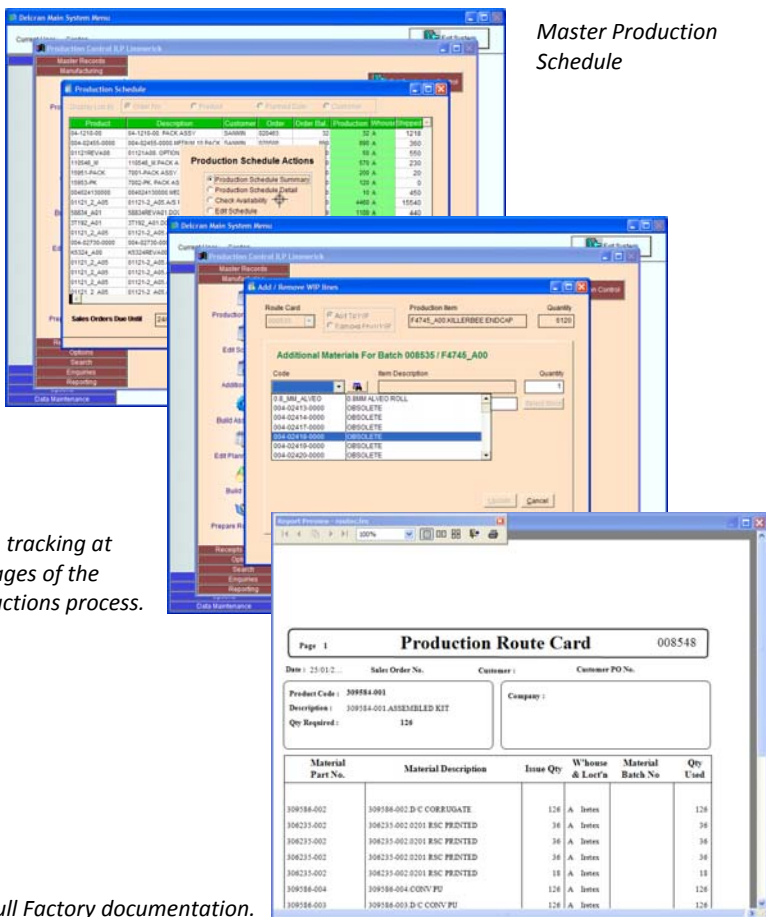


Delcran Production Module



Batch tracking at all stages of the productions process.

Full Factory documentation.

Key Benefits

Define Manufacturing Process

Each product is able to hold its own manufacturing process pattern, from its Bill of Material right through to the machine route and costing.

Full Traceability

All production batches are tracked along with the batch identity's of the raw material / assemblies.

Produce for Orders or Stock

Production runs can be for specific customer orders or for stock based on the forecast of demand requirements

Cost Control

Full tracking of production yield and scrap analysis by plant item or operator.

Delcran Production Control is able to provide a flexible solution to the manufacturing process across a very wide range of industry sectors.

Works Orders provide the basis for costing and tracking of the production process. The fully integrated Bill of Material structures, provide the backbone the control the cost and the traceability of what actually happens on the shop floor by full tracking scrap, yields and other production gains .

The system allows for the tracking of all raw materials and assemblies by batch number, in addition to product substitution and non standard route cards.

Bar codes and free format labels can be produced in the correct quantities for pallets, boxes and bags.

Stock is valued at all stages of the production process allowing the real cost of current work in progress to be monitored.

Material Requirements Planning provides the method of ensuring customer and forecast demand levels can be met by maximising the best use of available resources within the organisation.

Full reporting and analysis facilities are provided. Reports can be viewed, printed, emailed or produced to spreadsheet.

All Delcran modules are fully supported by our dedicated support team.



Process Structure	User defined structure of processes and machine loading for each manufactured item. Process can be fixed qty per hour, variable with start up period or a mixture.
Batch History	Unlimited batch history tracking of completed production batches. Ability to add notes to production batches after completion.
Production Schedules	Can be built for customer demand over a defined period or built manually for what is required. Any production shortages are identified with the opportunity to substitute parts shortages.
Build for Stock	Assembles or Finished products can be built for stock if required. Quantities to be built can be manually entered or calculated from the stock item Minimum/Maximum stock levels.
Production Route Cards	Route cards can be in whatever format is required by the user. The system can cater for all popular bar code formats. Labels and other product information, including bar codes, can be generated
Additional Work In Progress	Even when route cards are in production, they can be modified to add or remove items if required. This allow the system to react to any circumstances that may arise after the documentation has been produced.
Receipts from WIP	After the completion of the production stage, items are cleared from WIP and the system moves them into manufactured stock. Any scrap losses or production gains are recorded and the financial effect posted to the General Ledger. Data entry can be carried out using a laser scanner rather than keyboard if required.
Material Availability Enquiry	Allows stock shortage enquiry to be displayed/printed based on a simple "what happens enquiry" against a manufactured stock item or assembly.
CAD Drawings	Provides an interface so that CAD drawing can be viewed as part of the production system without the need to switch packages.
Flexible Reporting	We provide a comprehensive number of standard reports. Each report is controlled by a series of user defined criteria allowing the reports to produce only the exact dataset required.
User defined program and data access	Security id paramount in our system, all program access is by rights that are defined for each user. Administrators can also define users are having enquiry only access, in addition to which data files can be processed.



DELCRAN

Business Software

Unit 13A Blanchardstown Corporate Park, Dublin15 Ireland

Phone + 353 1 8293500 - Fax Fax + 353 1 8293288

www.delcran.com